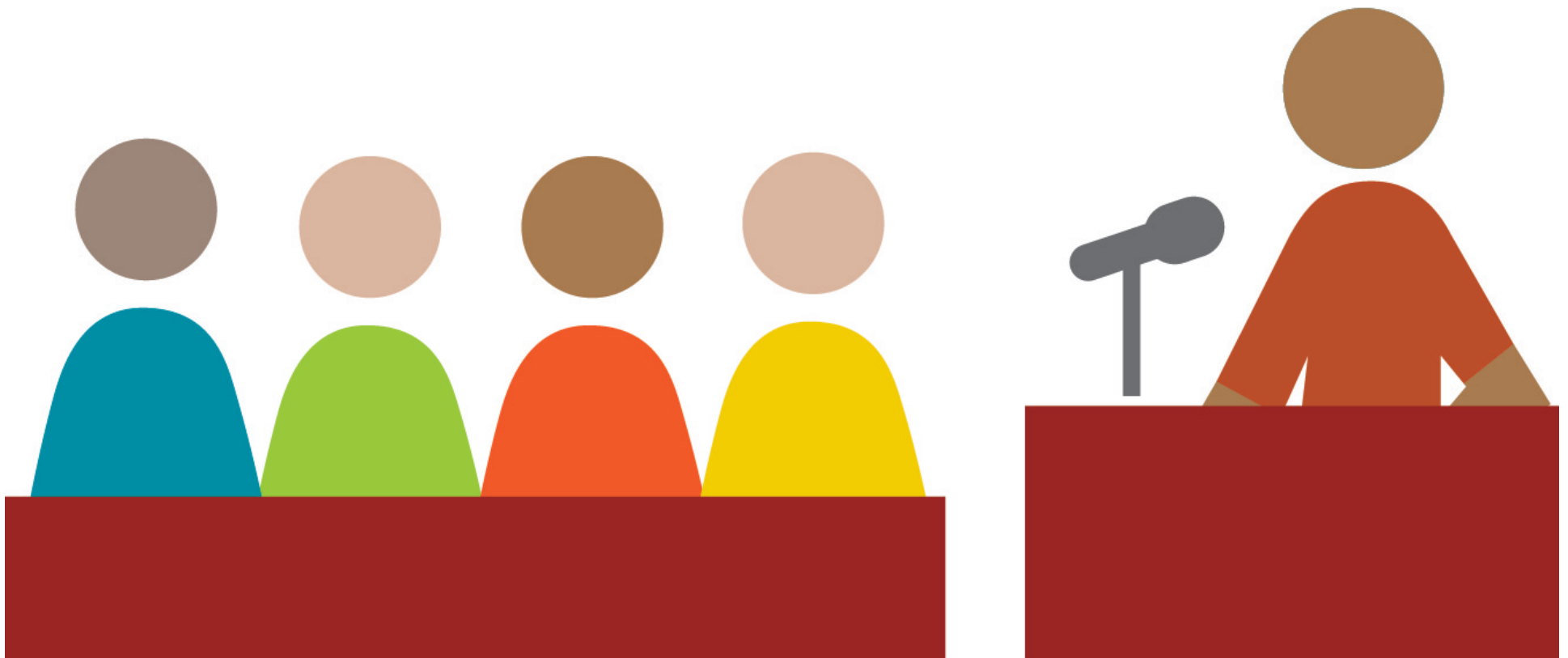


RUN WITH IT

PUBLIC PARTICIPATION IN THE POLICY MAKING PROCESS

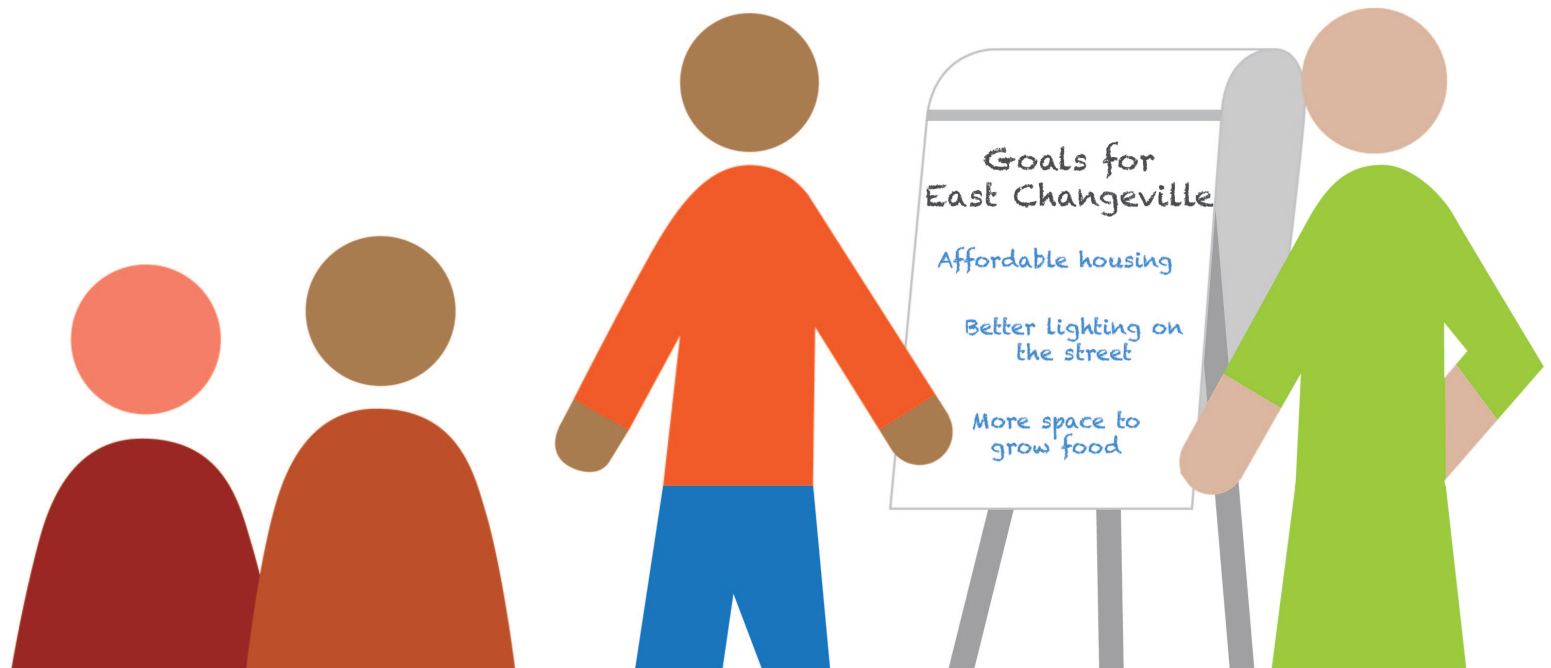


PRESENTATION AGENDA

Talk about the intersection of health and planning

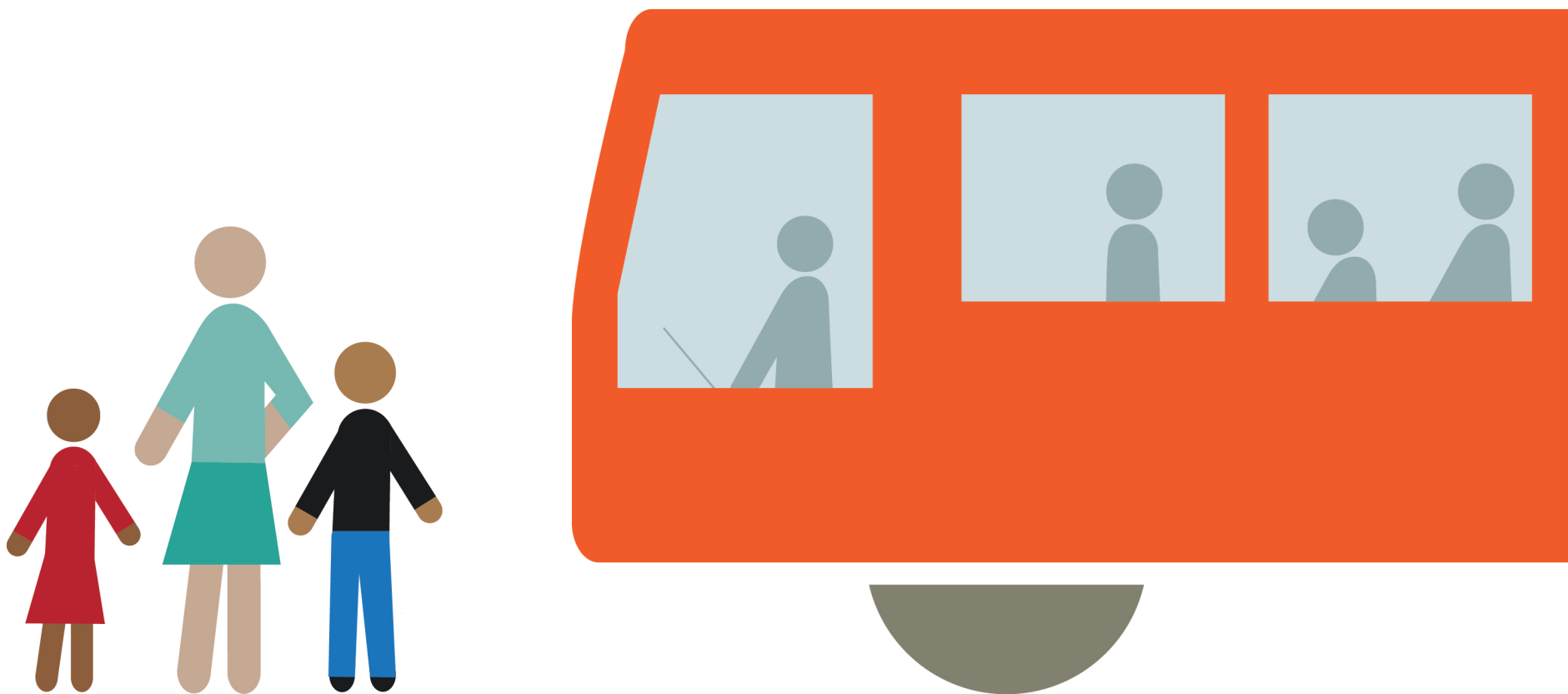
Clarify terms

Identify planning policies that can improve health outcomes



TRANSPORTATION AND HEALTH

Residents in highly walkable neighborhoods, or those who rely on public transit, are more likely to meet the recommended physical activity levels.



See Frank, Lawrence D., et al. "Linking Objectively Measured Physical Activity with Objectively Measured Urban Form: Findings from SMARTRAQ." *American Journal of Preventive Medicine* 28, no. 2 (2005): 117-125, 124

ACCESS TO HEALTHY FOOD

Fruit and vegetable consumption is higher among residents with access to a large grocery store.



AFFORDABLE QUALITY HOMES

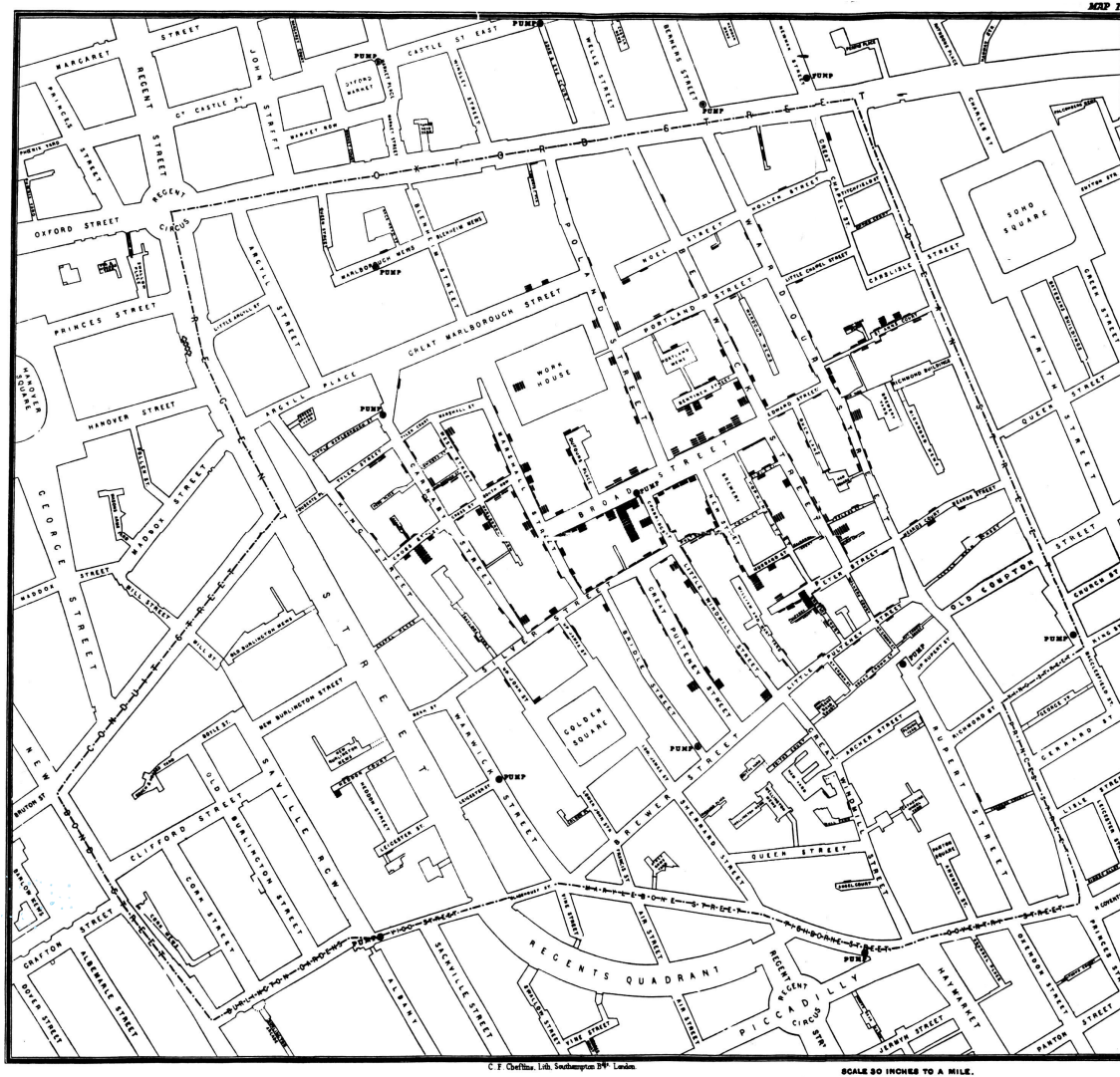
Access to affordable housing increases the income a household has available for maintaining and supporting health, by freeing up money for health care, food, and transportation.



March, Elizabeth L. et al. *Rx for Hunger: Affordable Housing*. Boston: Children's HealthWatch and Medical-Legal Partnership Boston, 2009.

Pollack, Craig Evan, Beth Ann Griffin, and Julia Lynch. "Housing Affordability and Health Among Homeowners and Renters." *American Journal of Preventive Medicine* 39, no. 6 (2010): 515-521,

PLANNING TO PREVENT ILLNESS WATER SYSTEMS



TERMS



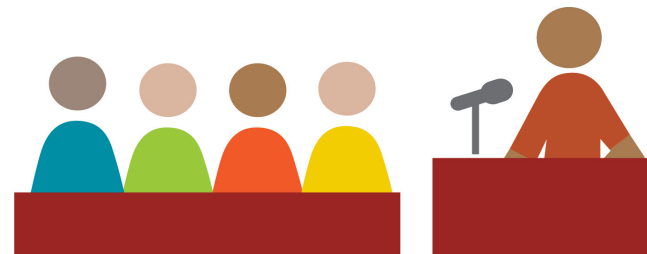
Built Environment



Policy



Public Health



Public Participation

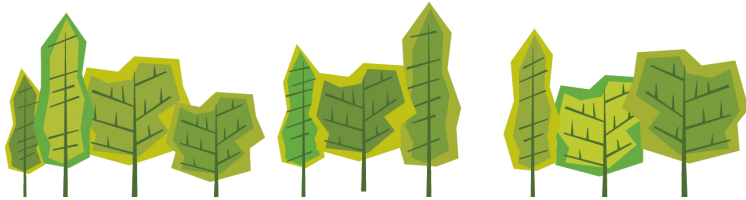
THE BUILT ENVIRONMENT INCLUDES...



Housing



Businesses and Institutions



Parks, Playgrounds, Farms and Gardens



Transportation systems

PUBLIC HEALTH

Collective well-being of everyone in a community.



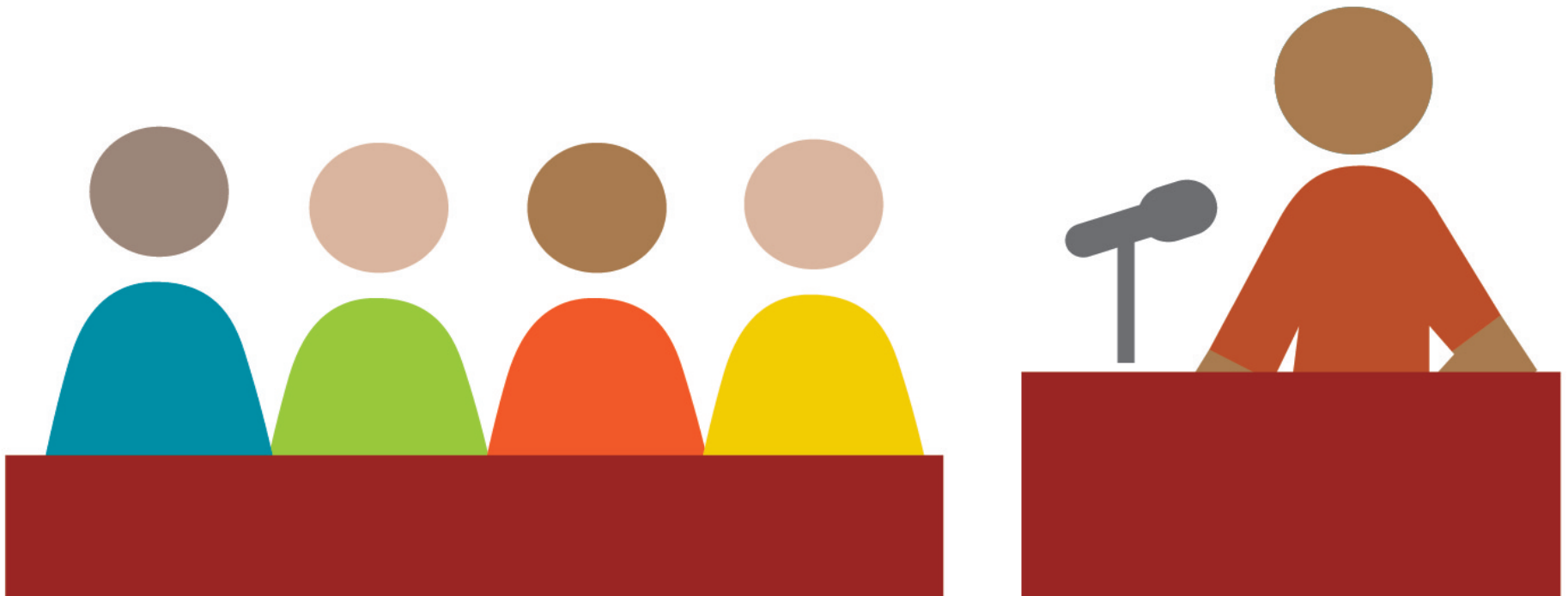
POLICY

Set of laws and regulations that dictate what individuals, public agencies and private entities can do.



PUBLIC PARTICIPATION

Individuals or community groups that take part in the policy making process.



THE POLICY TOOLBOX

Policies

Create infrastructure

Fund agencies or programs

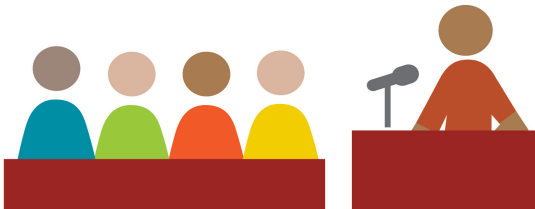
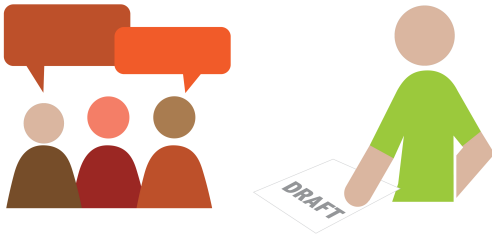
Regulate actions of individuals, public agencies or
private entities

LIFT UP YOUR VOICE



HOW PLANNING POLICY IS FORMED

GENERAL PLANS



GENERAL PLAN

1. Land Use
2. Mobility
3. Housing
4. Conservation
5. Open Space
6. Noise
7. Safety

GENERAL PLAN

Health Element

1. A City Built for Health.
2. Bountiful Parks and Open Spaces.
3. Food that Nourishes the Body and Soul.
4. An Environment Where Life Thrives.
5. Lifelong Opportunities for Learning and Prosperity.
6. Safe and Just Neighborhoods.

COMMUNITY PLANS



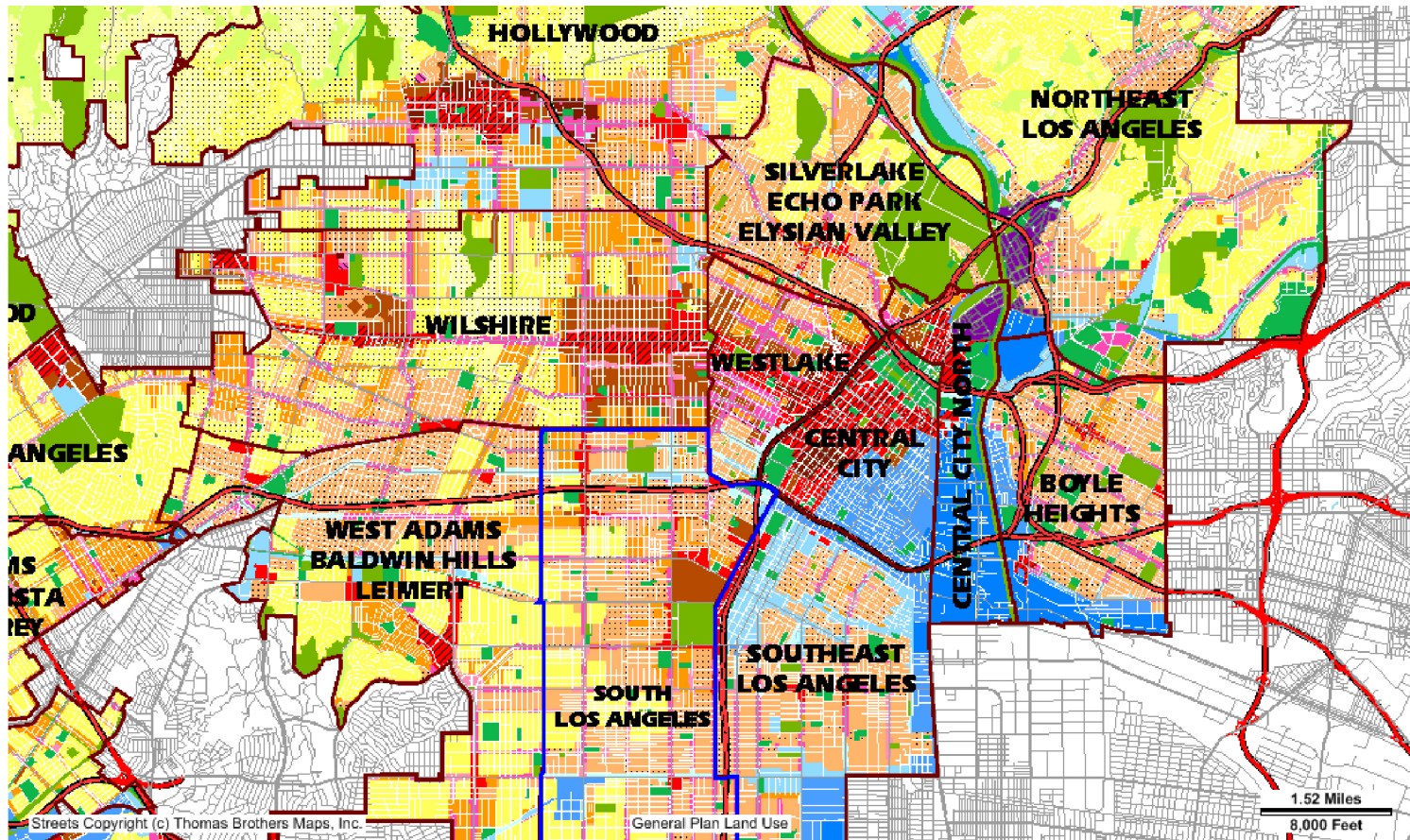
OTHER TYPES OF LAND USE POLICIES

Ordinances

Oil drilling community standards

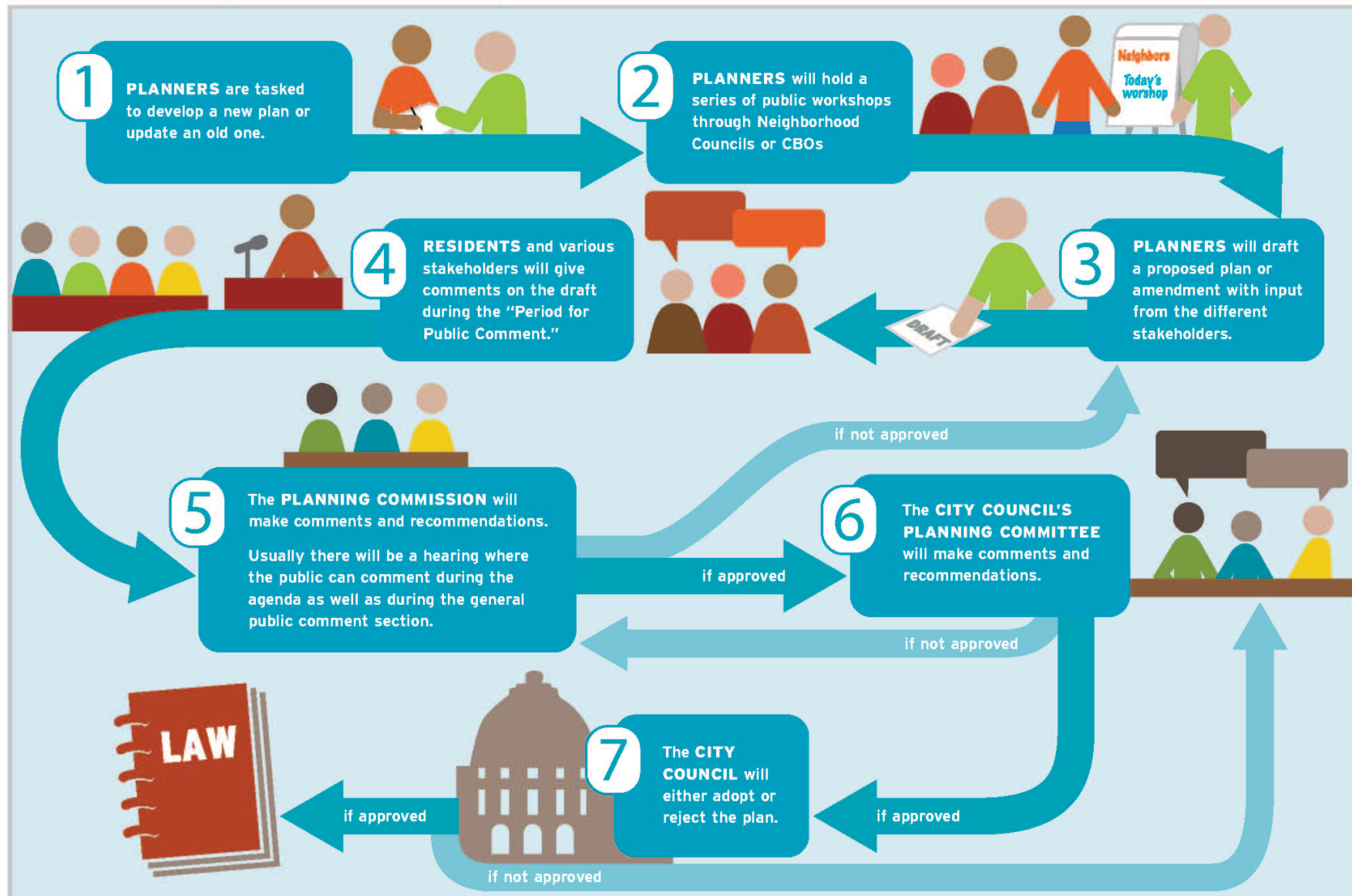
Community plan implementation overlay zones

EXAMPLE ORDINANCE: ZONING



Planners organize city land into three main categories:
Residential // Commercial // Industrial // Mixed Use

Planning Roadmap



CITY COMMISSIONS AND AGENCIES

City Council

City Planning Commission

Planning Department

Area Planning Commissions

Cultural Heritage Commission

Zoning Administrators

Neighborhood Councils



More information can be found at: <http://cityplanning.lacity.org/>

TOOLS YOU' RE GOING TO LEARN

How to...

Collect data

Choose policies

Spread the word

Talk and write letters to elected officials

THANK YOU!